

# GAS DETECTOR

CATALOGUE Model. **FPE.HC-702**

CERTIFICATE ISO 9001:2000/CE/CNS12681

## FOR USE

ALL FIRE ALARM SYSTEMS



## DOCUMENTATION

DATASHEET

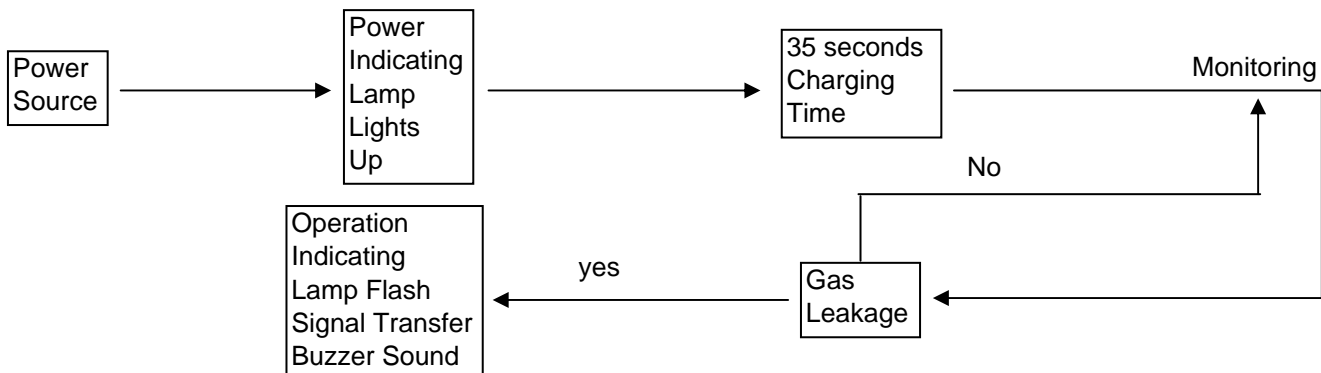
## Operation

When Gas Detector is connected to a power source, the power indicating lamp will lights up, and the monitoring function will not be normal until the internal component is stable. When the gas leaking happened and exceed predetermined standard, the detector will produce a loud and regular sound and the operation indicating lamp will flash for warning. The detector includes signal transfer terminal to activate other device at the same time. When the gas density decreased under predetermined standard, the detector will automatically back to monitoring status.

## Specification

POWER TYPE	CONTROL PANEL
Power Source	12-24V DC
Standby Current	40-45mA
Alarm Current	70-80mA
Charging Period	About 35 seconds
Alarm Sound	85dB/M and above
Sensitivity	0.05 - 0.30%
Detection Type	Natural Gas & Propane Gas
Ambient Temperature	-10 C ° +55 C °
Dimensions	8.5cm(W)x4.5cm(D)x12.5cm(H)
Weight	About 130g
Color	Gray

## Operation Flow Chart



# FIRE PROTECTION EQUIPMENT CO.,LTD

357/32 Moo4 Klongsongtunnun,  
Ladkrabang, Bangkok 10520

Tel:02-906-9141-3  
Fax:02-906-9144

E-mail:fpe11@hotmail.com  
www.fpthailand.com

UPDATE 1/2009