



FEATURES

- The interior and exterior structure of this detector is specially designed featuring with beautiful appearance, reliable constant temperature-accurate performance and easier maintenance and long life. The temperature sensing device is UL approved product.
- The function of main unit and breaking-line base is supplementary. Alar The function of main unit and breaking-line base is supplementary. perfect performance of the fire prevention system.

DUST RESESTANCE

The temperature sensing head is close type, more reasant to dust sticking that the error will be minized and the maintenance intervals can be lengthened.

LINE METERIALS

PCB design is adopted to include sensing head light-emitting deode and current limit resistant so the possibility of part falling is low.

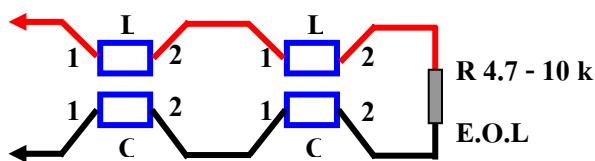
LINE FEATURES

The detector will lock and icoming heat and diapatch fire information if it reaches the warning point to the switchboard throught currentlimit resistance and diode for alarming.

Currentlimit restance and diode for alarming.

The line normally is in NO position and NC isproduced when in action.

WIRING INFORMATION



APPEARANCE STRUCTUR

- The detector stand 5 cm coly. The eight-sided smoke channel is free from deformation and with constant sensibility.
- The extra - large 10.6 cm base is easier to install and resisting to deformation
- The case is made with PC fire resistant material through injection method.
- The braking designde base meets the fire-fighting inspection standards.

Type	CL-181
Working voltage	16V-32V (DC24V)
Detecting temperature	70 °C
Applicable humidity	0 - 95% RH
Supervising currety	DC-0mA
action current	DC - 60mA (MAX)
sensibility	Inspection as per CNS 8874 Standard

DETECTOR STRUCTURE

Appearance	Weight	Diameter	Height
Ivory	130 g.	10.6 cm	5 cm

EFFECTIVE WARNING AREA

Height above the ground	Below 4 meters	4 - 8 meter
Building	20 M ²	15 M ²